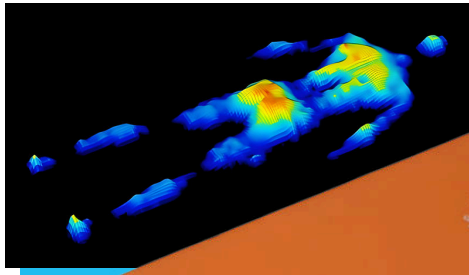


COPPER CARE MATTRESS

CASTELLATED PRESSURE SURFACE FOR MAXIMUM PRESSURE RISK MANAGEMENT



Pressure Care

MEDICAL GRADE PRODUCTS - HOME STYLE COMFORT
 TGA LISTED MEDICAL CLASS 1A

Used within the PA Hospital
 Spinal Unit Brisbane



Durable & High Resilient Rebound Foam

Designed to keep the spine aligned & not allow for the mattress to sag or drop.

Softer & Firmer Shoulder & Lumber Zones

Customised pressure care, pressure support chambers and lumbar zones.



Help Us Discover What Is Achievable Together





COPPER CARE

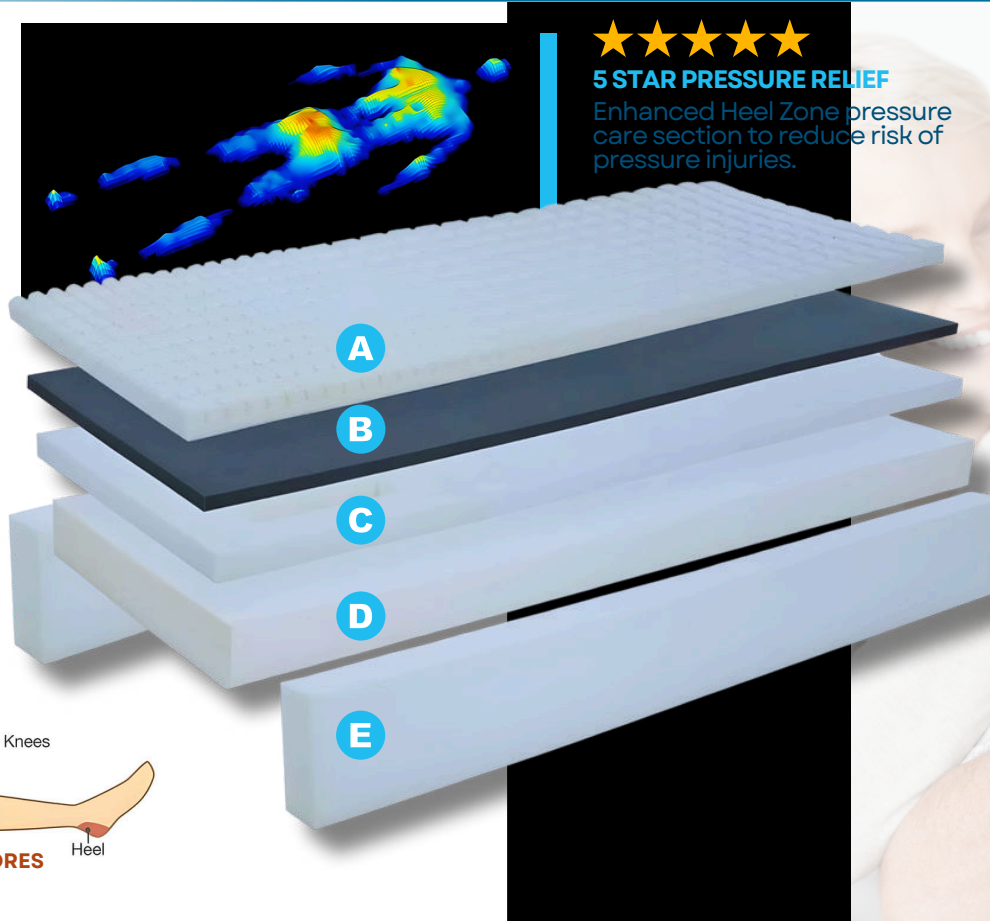
HIGH RISK PRESSURE CARE MATTRESS



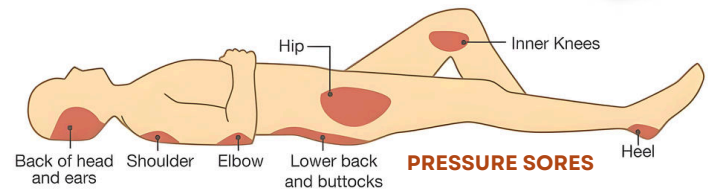
ADVANCED HEEL PRESSURE SORE PROTECTION

SLEEP SURFACE

- A** 50mm Copper Infused Castellated Pressure Surface for maximum pressure risk management.
- B** 30mm Bamboo Graphene Cooling medical grade pressure care foam.
- C** High density Comfort Foam.
- D** Premium grade Spinal Support Foam.
- E** Firm side support to assist in self & assisted transfers.



★★★★★
5 STAR PRESSURE RELIEF
Enhanced Heel Zone pressure care section to reduce risk of pressure injuries.



- Breathable 4-Way Waterproof Stretch Cover
- Clean & Cool Copper Infused Memory Foam
- Temperature Controlled Copper Disperses Heat
- Perfect Contour For All Bodies And Shapes
- Over 250mm Support Foam
- No Spring No Movement



ODOUR NEUTRALISING
3cm Layer Of Bamboo Charcoal Open Cell Memory Foam.

MULTI-LAYER SUPPORT
Customised Pressure Care And Pressure Support Chambers And Lumbar Zones.

EDGE SUPPORT
Non-Collapsing Edge Support Walls to assist with entering in and out of bed.

Pressure Care
MEDICAL GRADE PRODUCTS - HOME STYLE COMFORT
TGA LISTED MEDICAL CLASS 1A

350 KG
WEIGHT CAPACITY

COPPER CARE MATTRESS

ADVANCED HEEL PRESSURE SORE PROTECTION

Specifications

Specifications	Support Surface
Size	Long Single
Overall length	2030 mm
Overall width	920 mm
Overall height	250 mm

Specifications

Specifications	Support Surface
Size	King Single
Overall length	2030 mm
Overall width	1070 mm
Overall height	250 mm

Specifications

Specifications	Support Surface
Size	Long Double
Overall length	2030 mm
Overall width	1370 mm
Overall height	250 mm

Specifications

Specifications	Support Surface
Size	Queen
Overall length	2030 mm
Overall width	1530 mm
Overall height	250 mm

Technical Features

- Breathable 4-way waterproof stretch cover.
- Clean and cool copper-infused memory foam.
- Temperature-controlled copper disperses heat.
- Perfect contour for all bodies and shapes.
- Over 250mm support foam.
- No spring no movement.
- Non-collapsing edge support walls.
- Multi-layered mattress durable and high resilient rebound foam.
- Customised pressure care and pressure support chambers and lumbar zones.
- Castellated surface for pressure reduction.

Standard Features

- 25cm thickness, including 8cm of total pressure reduction foam comprising 5cm of castellated copper infusion and 3cm of bamboo charcoal infusion.
- Risk reduction of pressure ulcers and pressure sores.
- Advanced heel pressure sore protection
- Heat disbursement away from the body
- Firm edge support to assist with self-transfer in and out of bed.
- Anti-microbial mattress.
- Water-resistant cover with anti-leak protection seal.
- Weight rated to 350kg.
- Australian manufacturing compliant against harmful chemicals.
- Very High-Pressure Injury Risk – Waterlow score of 20+ (NB: this is a guide only and independent pressure mapping and Waterlow score is required).

Solace Sleep reserves the right to make changes without notice in design, specifications and models. The only warranty Solace Sleep makes is the written warranty extended on the sale or rental of this product.

For further information about this product or service, please [contact us](#) or [visit our webpage](#)

CALL FREE: 1800 270 935
support@solacesleep.com.au

