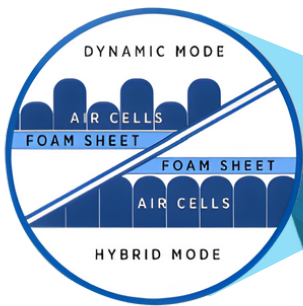
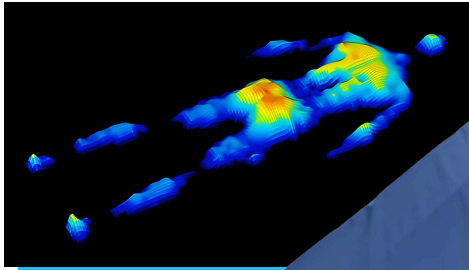


SOL-AIR HYBRID MATTRESS

ACUTE RISK PRESSURE ULCER PREVENTION



Pressure Care

MEDICAL GRADE PRODUCTS - HOME STYLE COMFORT
TGA LISTED MEDICAL CLASS 1A

Used for the acute care rehabilitation in Hospital
Spinal Wards and Pressure Injury Units



Ultimate Pressure Care enhanced by Anti-Microbial & Heat Diffusion Technology

Proudly designed in Australia to manage the risk of pressure ulcers without ignoring the fact that we still need comfort to rest without pain and to sleep better.

Safe and Secure "Firm Edge" Support For Assisted Or Self-Transfer

Transfer in comfort knowing you are fully supported. When using the Sol-Air Hybrid mattress you will be able to customise the comfort layer and the firmness of the whisper quiet air cells.



Help Us Discover What Is Achievable Together



SOL-AIR HYBRID MATTRESS

ACUTE RISK PRESSURE ULCER PREVENTION

ADVANCED HEEL PRESSURE SORE PROTECTION



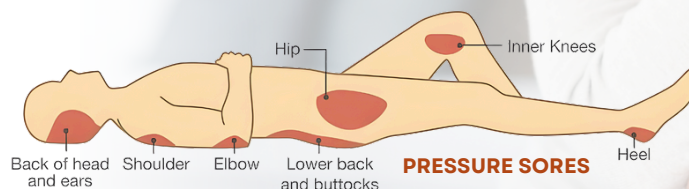
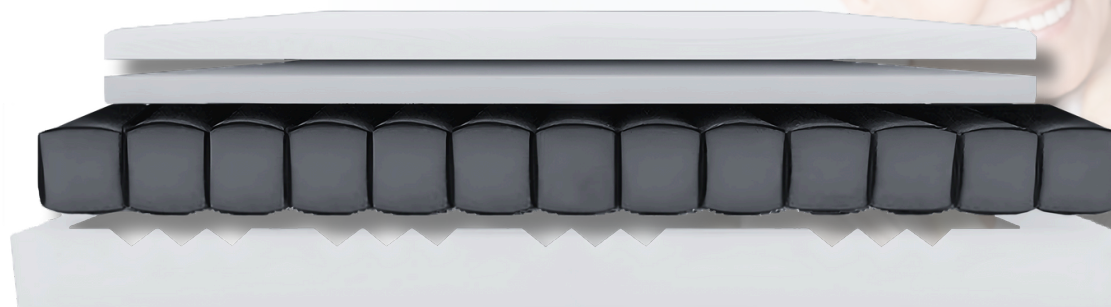
MEDICAL GRADE PU AIR CELLS

- Fully replaceable system.
- Quick release CPR hose.
- 14 interconnected alternating air cells.
- Air Cell chambers rated to 300KG.
- Advanced PU technology reduced movement noise.
- Safe and Secure "Firm Edge" support for assisted or self-transfer.
- Square shaped 12cm air cells providing better pressure reduction contact points.
- The unique hinge profile reduces form fatigue and allows mattress to easily conform to varied bed positions.



PRESSURE CARE COMFORT ZONE

- 50mm Castellated Copper-infused memory foam.
- 50mm High-Density support foam.
- Inner cover protecting against leakage.
- Anti-Bacterial treatment.
- Heat diffused away from the body.
- Exchangeable Firm comfort inserts to provide additional support.



PURE PU 4 WAY STRETCH COVER

- Waterproof.
- Fire Retardant.
- Anti-Bacterial.
- Breathable.
- Hidden Zip.
- Vapour Permeable.
- Enhanced skin shear protection.
- Contours due to premium stretch qualities.
- Secure handles for emergency transfers.
- Heavy Duty PVC Base Material: Durable, 100% Waterproof.
- Buckles and straps included to help secure mattress to bed.



8H BATTERY BACK UP PUMP

300kg Pump Capacity,
8 in-Built Battery Back-Up,
Silent Ergonomic Pump.

MULTI-LAYER SUPPORT

Customised Pressure Care And Pressure
Support Chambers And Lumbar Zones.

EDGE SUPPORT

Non-Collapsing Edge Support Walls to
assist with entering in and out of bed.

Pressure Care
MEDICAL GRADE PRODUCTS - HOME STYLE COMFORT
TGA LISTED MEDICAL CLASS 1A



SOL-AIR HYBRID MATTRESS

Acute Risk Pressure Ulcer Prevention

Specifications Support Surface

Size	Long Single
Overall length	2030 mm
Overall width	920 mm
Overall height	250 mm

Specifications Support Surface

Size	King Single
Overall length	2030 mm
Overall width	1070 mm
Overall height	250 mm

Specifications Support Surface

Size	Long Double
Overall length	2030 mm
Overall width	1370 mm
Overall height	250 mm

Specifications Support Surface

Size	Queen
Overall length	2030 mm
Overall width	1530 mm
Overall height	250 mm

Technical Features

- 4 way Pure PU stretch breathable material.
- Clean and cool copper-infused memory foam.
- Temperature-controlled copper disperses heat.
- Acute risk pressure care management.
- 14 interconnected alternating air cells.
- Quick-release CPR hose.
- 300kg safe working load (SWL).
- Waterproof.
- Fire Retardant.
- Anti-Bacterial.
- Breathable.
- Vapour Permeable.
- Hidden Zip.
- Non-collapsing edge support walls.
- Customised pressure care.

Standard Features

- 250mm thickness, including • 50mm Castellated Copper-infused memory foam and 50mm High-Density support foam.
- Risk reduction of pressure ulcers and pressure sores.
- Heat disbursement away from the body.
- Firm edge support to assist with self-transfer in and out of bed.
- Anti-microbial mattress.
- Water-resistant cover with anti-leak protection seal.
- Weight rated to 300kg.
- Australian manufacturing compliant against harmful chemicals.
- Very High-Pressure Injury Risk – Waterlow score of 20+ (NB: this is a guide only and independent pressure mapping and Waterlow score is required).

Solace Sleep reserves the right to make changes without notice in design, specifications and models. The only warranty Solace Sleep makes is the written warranty extended on the sale or rental of this product.

For further information about this product or service, please contact us or visit our webpage

CALL FREE: 1800 270 935
support@solacesleep.com.au

